

# ON WASHINGTON

WASHINGTON STREET HISTORIC DISTRICT

# Available for Lease

135 Washington Street, Norwalk, CT

## OVERVIEW

### SIZE

2,134 sf (Ground Floor)  
2,184 sf (Basement)

### BASE RENT

\$32/ground floor sf

### TRIPLE NET

\$10.80/ground floor sf

### FRONTAGE

22.9 Feet

### COTENANCY

Mecha Noodle Bar, Salon Etre, Oishi, Beadworks, Saltwater, Donovan's, Il Posto, Tablao, and more!

### COMMENTS

Easy access to I-95 and 7 Connector, walk to SoNo Train Station, 5 Private and Municipal Parking Garages within walking distance. Over 20 new construction apartment buildings in South Norwalk!

### CENSUS

88,816 people

The Washington Street Historic District is a highly preserved landmarked community at the convergence of new construction apartment buildings, hotels, a gorgeous waterfront, and a 24/7 eat, shop, and live culture.

@onwashingtonst



**For Further Information**  
203-984-3490  
[laura@simondavidrealestate.com](mailto:laura@simondavidrealestate.com)

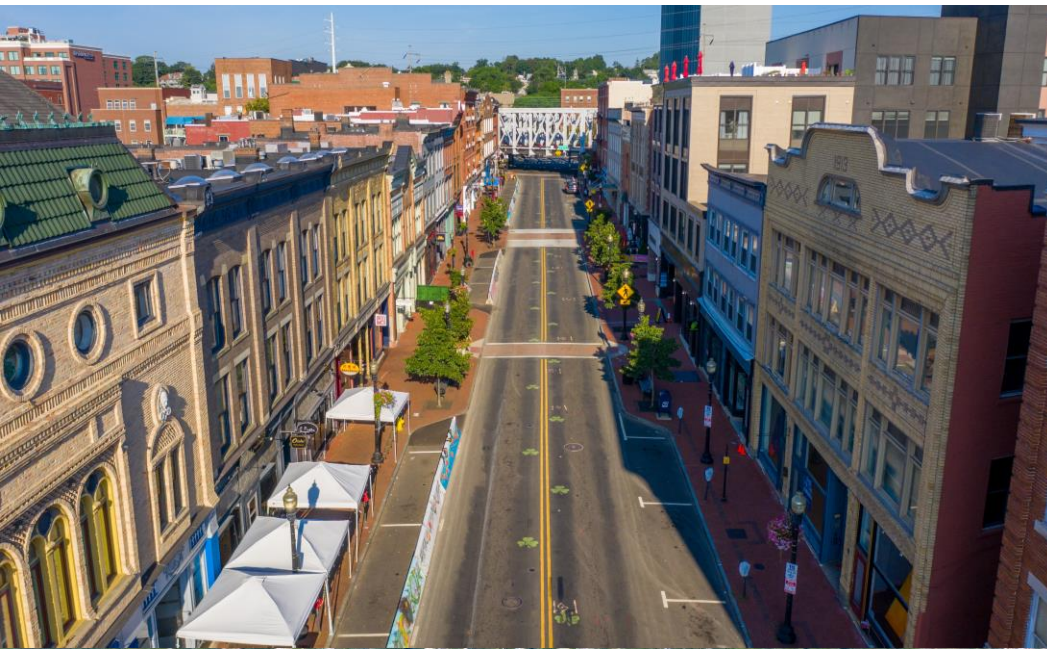
*Broker Cooperation Welcomed*



# Welcome to the Washington Street Historic District.



# Welcome to the Washington Street Historic District.



# 135 Washington Street | South Norwalk, CT

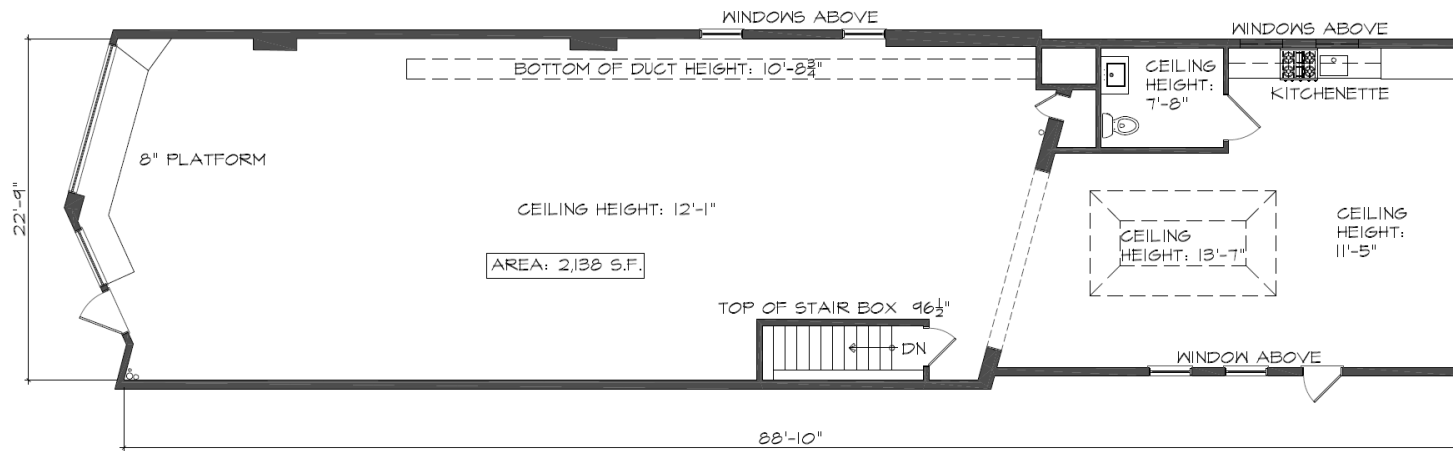


# 135 Washington Street | South Norwalk, CT



# 135 Washington Street | South Norwalk, CT

Any dimensions provided are approximate and should not be used for construction.



1 FIRST FLOOR PLAN

SCALE: 1/8"=1'-0"

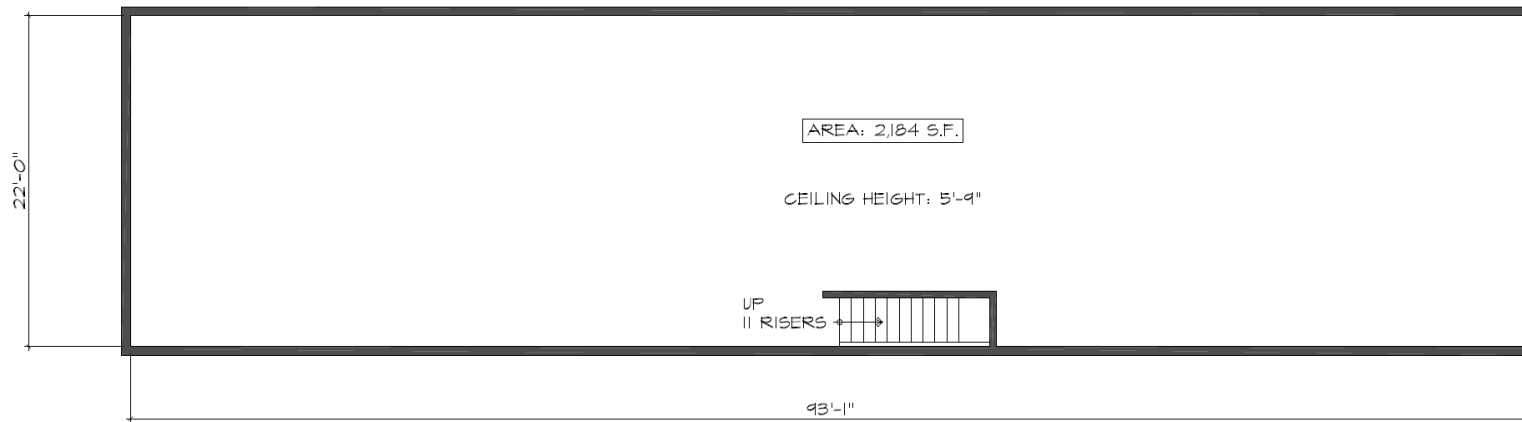
TENANT SPACE SURVEY

AGW SONO Partners LLC  
 97-77 Queens Boulevard,  
 Suite 620  
 Rego Park, NY 11374

135 WASHINGTON STREET  
 NORWALK, CT. 06854

# 135 Washington Street | South Norwalk, CT

Any dimensions provided are approximate and should not be used for construction



TENANT SPACE SURVEY

1 BASEMENT FLOOR PLAN

SCALE: 1/8"=1'-0"

AGW SONO Partners LLC

97-77 Queens Boulevard,  
Suite 620  
Rego Park, NY 11374

135 WASHINGTON STREET  
NORWALK, CT, 06854